

Brazil Study Tour

October 17 - 26, 2011



TABLE OF CONTENTS

Welcome	3
Heifer Cornerstones	4
Heifer Brazil	6
Background on Brazil.....	6
History of Heifer in Brazil.....	12
Resources & Further Reading	13
Itinerary	14
Staff Joining This Study Tour.....	17
Maps	18
Projects to be Visited.....	19

WELCOME

Dear Friends,

Welcome! It is our great pleasure to greet you and share this information packet in preparation for your journey to Brazil.

Your trip to the South American nation of Brazil will be an intensive educational experience in the world of sustainable community development, focusing especially on Heifer's approach of providing livestock and training to developing communities. You will see, hear, and touch Heifer's work throughout the trip by constant interaction with our Heifer Brazil staff and by visiting a number of communities with whom Heifer works. You will see Heifer's 12 Cornerstones for Just and Sustainable Development in action, and it is our hope that you will come away with a better understanding and appreciation of the uniqueness and effectiveness of the Heifer model of "Passing on the Gift."

You will not only learn about Heifer's work during this study tour, but will also learn about the rich and diverse culture of the people of Brazil, and the fascinating history of this nation. This tour will include museums, markets and the famous Brazilian beaches, tours of Salvador and Caruaru. Heifer has a long history in Brazil and our staff there are excited about your visit.

Full participation is one of our cornerstones, and we will make sure that each of you has a unique and fulfilling connection with Heifer. We ask that you come prepared to completely invest your mind in this unique experience. You will discuss the topics that the study tour brings to light and will have regular debriefings on the experience.

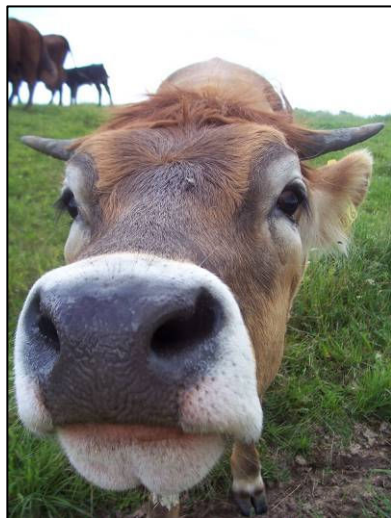
It is our expectation that you will return home with a greater understanding not only of Heifer's work, but also of the root causes of hunger, poverty and environmental degradation. We hope that you will come away from the study tour more committed to helping advance Heifer's work to find sustainable solutions to end hunger and poverty and care for the earth.

Thank you for joining this life changing journey to see Heifer's work first-hand in Brazil!

Sincerely,

The Heifer International Study Tours Program

HEIFER CORNERSTONES



Heifer International has developed a set of guiding principles or values called the **Cornerstones for Just and Sustainable Development**. These are aspects of our program that we consider essential for effective, sustainable development. Heifer uses the Cornerstones in developing and implementing projects and partnerships. The Cornerstones are also used to monitor and evaluate progress within a group. Individual Cornerstones work together to contribute to sustainable outcomes—the aim of holistic development. While attention is given to all of Heifer’s Cornerstones in project work, it is the values of the community that take precedence. Together, these 12 Cornerstones form the acronym PASSING on the GIFTS.

Passing on the gift

Accountability

Sharing and caring

Sustainability and self-reliance

Improved animal management

Nutrition and income

Genuine need and justice

on the

Gender and family focus

Improving the environment

Full participation

Training and education

Spirituality

Passing on the Gift

“Passing on the gift” is the heart of Heifer International’s sustainable community development philosophy. Every family who receives an animal signs a contract to pass on one or more of their animal’s offspring to another family in need, along with the training and skills that they have acquired. This unique approach creates a ripple effect that transforms lives and communities.

Accountability

Heifer provides guidelines for planning projects, screening recipients, monitoring progress and conducting self-evaluations. The groups define their own needs, set goals and plan appropriate strategies to achieve them. They are also responsible for submitting semi-annual monitoring reports to Heifer International.

Sharing and Caring

Heifer believes that global problems can be solved if all people are committed to sharing what they have and caring about others. One of our most important Cornerstones, sharing and caring is an integral part of our vision for a just world.

Sustainability and Self Reliance

Because Heifer funds projects for a limited time, project groups must devise strategies for its continuity. In our experience, self-reliance is most easily achieved when a group has varied activities and generates support from several sources.

Improved Animal Management

Feed, water, shelter, reproductive efficiency and health are the essential ingredients in successful livestock management. The animal must be an appropriate breed for the area and should be a vital part of the farm activities without placing an extra burden on the family or resources.

Nutrition and Income

Livestock contribute directly to human nutrition by providing high-quality protein. Indirectly, they provide draft power for cultivation and transportation, as well as manure for soil fertility. Livestock provide income for education, healthcare and housing, and as living savings accounts, provide long-term economic stability.

Gender and Family Focus

Gender refers to the socially-defined roles of women and men in each culture. Heifer encourages women and men to share in decision-making, animal ownership, labor and benefits. Heifer has a gender initiative program.

Genuine Need and Justice

Heifer is a partner to people in need who can improve their quality of life with modest support. Priority is given to marginalized groups. The poorest in the community should be included and receive priority for assistance. Families are eligible regardless of creed or ethnic heritage.

Improving the Environment

The introduction of Heifer International projects should have a positive impact on one or more of the following: soil erosion, soil fertility, sanitation, forestation, biodiversity, pollution, wildlife and watershed conditions.

Full Participation

Members of the group "own" the project and have control over all key decisions. Heifer is committed to involving all members in decision-making, working with grassroots groups to develop strong leadership and organization.

Training and Education

Groups determine their own training needs, and local people are involved as trainers. Training includes formal sessions as well as informal farm visits and demonstrations. In addition to training in livestock husbandry and environmental conservation, groups have requested training in food processing, marketing and human nutrition.

Spirituality

Spirituality is common to all people, regardless of their religion or beliefs. It is expressed in their values, sense of connectedness to the earth and shared vision of the future. Often spirituality creates a strong bond among group members, giving them faith, hope and a sense of responsibility to work together for a better future.

HEIFER BRAZIL

BACKGROUND ON BRAZIL¹

The Federative Republic of Brazil is the largest country in South America. It shares a border with every South American country except Ecuador and Chile. Along its northern border are French Guiana, Suriname, Guyana, Venezuela and Colombia; to the west are Peru, Bolivia, Paraguay, Argentina and Uruguay. Brazil is an equatorial country: the northeastern coast lies on the North Atlantic Ocean, while its southeastern coast lies on the South Atlantic Ocean. Brazil gained independence from Portugal in 1822. It is one of the most economically powerful nations in the Western Hemisphere, and it is the fifth largest nation in the world. While most Latin American nations were founded by Spanish-speakers, Brazil was originally a Portuguese colony. Portuguese remains the country's official language.



GENERAL INFORMATION

- Official Language: Portuguese
- Population: 192,272,890 (2009 estimate)
- Currency: Real
- Area: 8,511,965 square kilometers (3,286,597 square miles)
- National Motto: Ordem e Progresso (Portuguese, "Order and Progress")
- National Anthem: "Hino Nacional Brasileiro"
- Capital: Brasilia

PEOPLE & CULTURE

Population: The majority of Brazilians are an ethnic mixture of Portuguese (the primary European group to settle in Brazil), Africans (who arrived as slaves) and indigenous peoples, such as the Guarani and Tupi. In addition, there have been many other ethnic settlements in Brazil, including Asians, Middle Easterners and Europeans. The official language of Brazil is Portuguese, but other languages (English, Spanish and French) are common second languages for Brazilians. In addition, there are over 100 Amerindian languages spoken throughout Brazil. The primary religion in Brazil is Roman Catholicism, but because of the overall diversity of the population, many other religions are common, including Assemblies of God, Baptists and Pentecostals. In addition to the strictly Christian faiths, there are some hybrid religions that mix Christianity and African spiritism, such as Kardecism. The metropolitan region of Brasilia, which includes all of its suburbs, is home to more

¹ Background information taken from Craig Belanger, "Our World: Brazil," Great Neck Publishing, 2010, <http://search.ebscohost.com/login.aspx?direct=true&db=mih&AN=17574738&site=src-live> (accessed September 17, 2010).

than 2,606,885 people. But there are five cities in Brazil that are even larger than Brasilia, including Sao Paulo (11,150,249) and Rio de Janeiro (7,145,472). Most Brazilians (around 80 percent) live in coastal regions in or near such massive urban centers as Rio de Janeiro, Sao Paulo, Salvador, Belo Horizonte and Brasilia. The Amazonian region of Brazil is not as densely populated.



Native People: The indigenous population of Brazil declined sharply within a few hundred years after the arrival of European explorers and settlers in the early sixteenth century. Where once there were several million indigenous people in Brazil, at the turn of the twenty-first century, they comprise a fairly small proportion of the total population, numbering approximately 300,000. Among the more populous tribes are the Guarani, the

Yanomami (who live along the Brazil-Venezuelan border) and the Kayapo, who inhabit the eastern Amazonian region. Other tribes include the Ofaye, Banawa and Awa. It has been estimated that as many as 50 or more Indian tribes still live in isolation in the Amazon region. Many of the indigenous languages of Brazilian Amerindians are endangered or have died out altogether. Of major concern to many tribes, such as the Yanomami, are issues concerning both the rapid deforestation of the Amazon rainforest and indigenous land rights. Other issues include the ongoing battle for civil and economic rights. Governmental and private efforts are underway to improve economic and educational conditions among Brazil's tribal people.

Education: Education for Brazilians is compulsory between the ages of seven and fourteen. Public education is free. Approximately one-quarter of state and local tax revenue is given over to education throughout Brazil. In recent decades, there has been much improvement compared with earlier periods when the education system was in need of major reform. As a result, the adult literacy rate rose from 81 percent in 1990 to 87 percent in 2003, primary school enrollment rates increased, and children tended to stay enrolled in school longer. In such population centers as Brasilia, the literacy rate is much higher (93 percent) than in rural communities. Important universities in Brazil include the Universidade de Sao Paulo, the Universidade de Federal de Minas Gerais, and the Universidade Federal de Rio de Janeiro.

Health Care: The Brazilian health care system serves as a model to many developing nations: Brazilians have a constitutional right to universal access to medical care. All Brazilians are guaranteed free coverage at either public or private medical facilities, and most private facilities are subsidized by the government. Between 8 and 9 percent of the government's budget is allocated to pay for these services. Most Brazilians take advantage of this unique health care system.

Food: The ethnic diversity of Brazil is evident in its cuisine. African, Portuguese and Indian recipes often combine flavors and share ingredients. The addition of so many other cultures to the ethnic mix in Brazil has served to make its national cuisine even richer. The cuisine of Brazil can be subdivided regionally: north, northeast, central-west, southeast and south. Popular dishes include feijoada (a stew made with black beans and smoked or sun-dried meat), steak and sweet potato fries, coxinhas (mock chicken legs), mugunza (a dessert made with hominy), and fish stew. In general, Brazilians enjoy their food and do not rush a meal. They rarely eat in public places or at work and instead choose to eat at home. The evening meal is usually eaten quite late.

Arts & Entertainment: Art in Brazil developed after European models following the arrival of the Portuguese into the region. Modernism in art, music and literature were all imported from Europe, while African and Indian rhythms have set the tempo for much of Brazil's music. Brazil's beloved national art form is the samba. Samba grew out of the choro, which in turn grew out of the Portuguese fado and other musical styles. Other popular music forms that have evolved in Brazil include the bossa nova (which was popularized outside Brazil by American jazz musicians in the 1960s), capoeira, carimbo and forro music. Many Brazilian musicians and composers have achieved international prominence, including composer Heitor Villa-Lobos, composer and singer Antonio Carlos Jobim, singer Astrud Gilberto, bandleader Sergio Mendes, singer/songwriter Tom Ze, singer and actress Carmen Miranda, and thrash metal band Sepultura. The most striking example of Brazilian architecture may be the city of Brasilia, which was originally planned as a city of 500,000. It was built (in the shape of an airplane) between 1956 and 1960 and was designed around the theories of Le Corbusier, a Swiss architect who is known for working in the International style (based on the Bauhaus style). Although many critics have lambasted the design and plan of Brasilia, the city's features and layout are striking reminders of the influence of European art and architecture on South American culture. Construction based on the original design of Brasilia is ongoing. In addition to Brasilia, Brazilian cities offer many other fine examples of modern architecture, including the Museum of Modern Art in Sao Paulo and the Church of Pampuhla in Belo Horizonte. Brazilian literature has given many important writers to the world, including Jorge Amado, Paulo Coelho, Graciliano Ramos and Joaquim Maria Machado de Assis. Brazilian cinema, like its literature, has been an unflinching observer and critic of the politics and culture of this country. It has earned a place as one of the most important cinemas in South America, as well as internationally, since the 1960s. Such filmmakers as Carlos Diegues, Glauber Rocha, Joaquim Pedro de Andrade, Hector Babenco and Walter Salles are among Brazil's most inventive film artists. By far, the most important pastime for Brazilians is futebol, (known as soccer in the United States and football in Europe). Brazilian teams have won the World Cup soccer tournament five times: in 1958, 1962, 1970, 1994 and 2002. Among the many famous Brazilian soccer players are Pelé (real name: Edson Arantes do Nascimento), perhaps the greatest soccer player in history; and Ronaldo (real name: Ronaldo Luiz Nazário de Lima). Brazil is a center of international attention each year during its Carnival celebration, one of the most popular festivals in the world. Carnival is an annual feast that is most widely and famously celebrated in Rio de Janeiro. Among the

festivities each year are the Samba School Parade, masquerades and large public parties.

ENVIRONMENT & GEOGRAPHY

Topography: Several large rivers run through Brazil, including its most prominent, the Amazon River, which stretches from its source in the Peruvian Andes to its mouth at the Atlantic Ocean in the northern portion of the country. The Amazon is the longest river in the Western Hemisphere, and along with the Nile, one of the longest in the world; by volume, it is the largest river in the world. The Amazon River is narrow in some places, but several miles wide in others, and has more than a thousand tributaries. It also supports the immense Amazon rainforest; within the rainforest are thousands of species of plants, animals and insects.

Northeast Brazil contains a semi-arid desert, the Caatinga. The Plantanal is the largest continental wetland in the world, and more than half of it lies in Brazil, along the western border. South of the Amazon Basin are the Brazilian Highlands, an area of river valleys, hills and mountains. The Cerrado is a tropical grasslands area in central Brazil. Brazil's Atlantic coastline is very long (8,000 kilometers, or 4,971 miles) and mountainous. The highest point in Brazil is at Pico da Neblina, which is 3,014 meters (9,888feet) high.

Natural Resources: Since it is so large and geographically diverse, Brazil has many natural resources; among the most important resources are bauxite, gold, iron ore, copper, timber, rubber, Brazil nuts, palm oil, limestone, sea salt and tin. Of major concern to environmental activists around the world is the continuing deforestation of the Amazon rainforest: this practice is quite destructive to animals and plant species, and may even have a detrimental effect on the planet's atmosphere. Other areas of concern are the air and water pollution in such cities as Rio de Janeiro and Sao Paulo, illegal trade in wildlife, and wetlands degradation.

Plants & Animals: Brazil has what may be considered the most diverse ecosystem on the planet. In the south of Brazil, pampas, or grasslands, are common parts of the landscape, while caatinga, or low scrub, is prominent in the northeast area of Brazil. Cacti are also found in some areas of Brazil. A wealth of tropical plants dominate the Atlantic and Amazon rainforest region; among the thousands of plants that live here are bromeliads, which provide their own tiny ecosystem for several kinds of insect; lianas, or climbing vine; orchids; and the Brazil nut tree. Many of the plants in the rainforest grow on other plants. Of the hundreds of species of animals found in South America, most are indigenous to Brazil. Common animals of the rainforest include the macaw, iguanas, poison arrow frogs, toucans and spider monkeys. More than 1,000 species of freshwater fish can be found in the Amazon. Brazil is home to many other animals, including leopards, capybaras (the size of a large dog, they are the world's largest rodent species), tapirs and peccaries, and tens of thousands of insect species.



Climate: Generally, the weather in Brazil has very little variation. Brazil is temperate in the southern portion, but is mostly tropical throughout the country. In the Amazon region, the climate is mostly wet, very humid, and has almost no dry periods. The average temperature in the north is 25° Celsius (77° Fahrenheit). Rainfall in the north averages about 220 centimeters per year (90 inches), while in the grasslands region, it averages about 160 centimeters per year (60 inches). Heavy occasional rainfall and drought are common in the Sertao region. Depending on topography, the climate can be varied: in Rio de Janeiro, which is coastal, temperatures in summer can be hot and humid; while in Brasilia, which is inland, it may get as hot as in Rio de Janeiro, but not as humid.

ECONOMY

Industry: The major industries in Brazil include petroleum and petrochemicals, mining, ethanol, power generation (mostly hydropower), telecommunications, tourism, and cement and lumber. Important manufactured products include motor vehicles, aircraft, and shoes. An economic power among Latin American nations, Brazil is the third largest manufacturer of petroleum in South America (after Mexico and Venezuela), and the largest manufacturer of petrochemicals in the region. Brazil's main exports are transport equipment, shoes, soybeans, iron ore, coffee and automobiles. Brazil is also one of the world's leading gem producers. The unemployment rate of Brazil is 7.8 percent (2008 estimate). Brazil's labor force is vast and accounts for the success of many of its industries during rough economic periods. The largest sectors for employment are services, agriculture and industry.

Agriculture: Brazil's agricultural industries account for nearly one-third of its export revenues. Brazil's most important crops include coffee, soybeans, wheat, rice, corn, sugar cane, cocoa, oranges and bananas. Beef is the major livestock industry in Brazil, followed by pigs, sheep and goats.

Tourism: Thanks to the vast holiday offerings in Brazil, including ecotourism in the Amazon Basin and festivals such as Carnival in Rio de Janeiro, its tourism industry is quite large. In 2009, approximately 6.5 million people visited Brazil. Tourism generates over \$5 billion USD annually and employs over 2 million Brazilians. The most popular destinations in Brazil include the beach resorts in large coastal cities such as Rio de Janeiro and Sao Paulo and in the state of Ceara; the Tocantins region, which bridges the Amazon Basin to other regions in Brazil, such as the Pantanal; the Amazon itself; the Festival Folcorico de Parintins; a wealth of sites that offer a glimpse into Brazilian history, such as the city of Ouro Preto, center of the Revolution of Minas Gerais; and the various other regions in Brazil which offer cultures and landscapes unique unto themselves.

GOVERNMENT

The Federative Republic of Brazil is a federal republic. There are twenty-six states and one federal district, which is the capital city of Brasilia in the state of Goias. The last major constitutional change was in 1988, when the Brazilian constitution was rewritten to include, among other important matters, provisions for the protection of wildlife and indigenous peoples. The Brazilian government is comprised of executive, legislative and judicial branches. The head of state, as well as the head



of the government, is the president. The president appoints his own cabinet officers. Presidents and vice presidents are elected by popular vote to four-year terms. The National Congress of Brazil is bicameral, meaning that there are two legislative houses, the Federal Senate and the Chamber of Deputies. Members of these houses are elected by popular vote for eight-year and four-year terms, respectively. The judicial branch is

comprised of three tribunals: the Supreme Federal Tribunal, the Higher Tribunal of Justice and Regional Federal Tribunals. Among the many political parties operating in Brazil are the Brazilian Democratic Movement Party, the Worker's Party and the Brazilian Labor Party. Modern Brazilian history can be dated from 1964, when economic and social reformer President Joao Goulart was overthrown in a coup d'etat that was backed by the United States government (who feared a communist regime under Goulart). Between 1964 and 1985, Brazil saw a succession of military dictators whose regimes were marked by state oppression and censorship, economic growth at the cost of increased national debt, and the "disappearance" of many innocent Brazilians. After 1985, Brazilian rule was accompanied by more democratization, positive growth in the Brazilian economy that propelled it to a place of major importance in both Latin American and world economies, and the continued reform efforts of popularly-elected governments.

FUN FACTS

- Brazil was the center of the Portuguese kingdom in the early nineteenth century, when the Portuguese royal family under King John VI fled to Rio de Janeiro during the Napoleonic Wars.
- Nearly all of the navel oranges grown in the United States are descended from two trees brought to California from Brazil in 1875. One of them is still planted in Riverside, California.

HISTORY OF HEIFER IN BRAZIL

Heifer International began its work in Brazil in 2005 with a goal to promote sustainable food systems, which include agro ecological production, transformation, marketing and consumption of healthy foods. The projects promote knowledge, skills and power among communities based on popular education principles.

Heifer is present in the northern states of Bahía, Pernambuco, Paraíba, Alagoas, Sergipe, Rio Grande do Norte, Ceará, Piauí and Maranhão; as well as the southern states of Paraná, Santa Catarina and Rio Grande do Sul.

During fiscal year 2009 the Brazil and Argentina Programs consolidated and expanded its coverage significantly. During 2009, 13 new projects began implementation in Brazil, with a diverse range of organizations (indigenous, rural women, small farmer movements, agroecological non-governmental organizations (NGOs) acting with different population sectors and networks of organizations). This increased the number of projects to 26 at present time. The projects emphasize organizational strengthening for social action in the construction of a new rural development model that favors small farmers, rural and urban communities and traditional peoples for generations to come.



The projects are implemented by 32 partner organizations representing rural, indigenous, women's organizations, societal movements, NGO's and networks acting in the field of agroecology. The projects include actions under the Program's three priority areas: the framework of food sovereignty, main streamed policies of gender equity and affirmation of ethnic and cultural identities.

By 2012, the Heifer International Program in Brazil and Northern Argentina will be a strengthened program contributing to the efforts, struggles and initiatives of a broad range of societal movements, rural, indigenous and women's organizations, traditional population groups, urban grassroots sectors, networks and federations.

Heifer International's program goal is to construct a new rural development model based on small farming, food sovereignty and agro ecology. This will contribute to guaranteeing and improving people's living conditions and livelihoods in these areas.

RESOURCES & FURTHER READING

US Department of State Travel Information:

Brazil - http://travel.state.gov/travel/cis_pa_tw/cis/cis_1072.html

Brazil Embassy - <http://www.brasilemb.org/>

CDC Website:

Brazil - <http://wwwnc.cdc.gov/travel/destinations/brazil.aspx>

Brazilian Travel - <http://wikitravel.org/en/Brazil>

Heifer.org and World Ark Articles:

"Flooding Affects Heifer Projects in Brazil"

<http://www.heifer.org/site/c.edJRKQNiFiG/b.4804523/>

World Ark (October 2006) "Positive Forces: Real People Changing the World"

<http://www.heifer.org/atf/cf/%7BE384D2DB-8638-47F3-A6DB-68BE45A16EDC%7D/'06%20Sep.Oct%20World%20Ark.pdf>

Further Reading:

Lonely Planet: Brazil Travel Guide by Regis St. Louis (January 2008)

Dance Lest We All Fall Down: Breaking Cycles of Poverty in Brazil and Beyond by Margaret Willson

Born Again in Brazil: The Pentecostal Boom and the Pathogens of Poverty by R. Andrew Chesnut

The New Brazil: From Backwater to Brick by Riordan Roett

Children on the Streets of the Americas: Globalization, Homelessness and Education in the United States, Brazil, and Cuba by Roslyn Arlin Mickelson

Favela: Four Decades of Living on the Edge in Rio de Janeiro by Janice Perlman and Fernando by Henrique Cardoso

Brazil: Five Centuries of Change by Thomas E. Skidmore

Brazilian literature has given many important writers to the world, including Jorge Amado, Paulo Coelho, Graciliano Ramos and Joaquim Maria Machado de Assis.

Movies

Discovery Atlas: Brazil Revealed (2006)

City of God (2004)

The Middle of the World (O Caminho das Nuvens) (2005)

Hour of the Star (2005)

Also, such filmmakers as Carlos Diegues, Glauber Rocha, Joaquim Pedro de Andrade, Hector Babenco and Walter Salles are among Brazil's most inventive film artists.

ITINERARY

Tentative Schedule: October 17 - 26, 2011*

Date	Activity	Responsible Person	Remarks
Monday Oct. 17, 2011 Day One	<ul style="list-style-type: none"> • Morning or afternoon arrival at Deputado Luis Eduardo Magalhaes International Airport (SSA) in Salvador, Brazil • Heifer Brazil staff will pick up participants and take them to the hotel for check-in • Welcome dinner with Brazil staff (if accommodating flights are available) • Study Tour Basics & Orientation 	Study Tour Leader, Viviane de Jesus & Olga Matos	<p>Approx. 40 min. drive from airport to hotel</p> <p>Overnight at the Hotel Bahia do Sol Website: www.bahiaadosol.com.br</p>
Tuesday Oct. 18, 2011 Day Two	<ul style="list-style-type: none"> • Breakfast at the hotel • Visit the Country Office for an introduction to Heifer's work in Brazil; presentation on Heifer International's history, community development model and a Cornerstones Workshop • Lunch at Di Mercatto restaurant close to office • City tour of Salvador – visit the Old Town (a World Heritage Site), the African-Brazilian Museum and the Mercado Modelo • Dinner & show at the O Coliseu restaurant in the Old Town (www.ocoliseu.com.br) 	Study Tour Leader, Viviane de Jesus & Olga Matos	<p>Overnight at the Hotel Bahia do Sol</p> <p>Bahia Tourism: www.Bahia.com.br</p>
Wednesday Oct. 19, 2011 Day Three	<ul style="list-style-type: none"> • Breakfast at the hotel and early check-out • Morning flight from Salvador to Campina Grande, Paraíba State (10:20am - 1:40pm) • Check-in to the Marc Center Hotel • Visit the ASPTA office (a partner organization with Heifer Brazil) for a presentation on the work done in the central region in partnership with Pólo Sindical, PATAC and Coletivo • Lunch in Campina Grande • Visit the "Agroecological Transition in the Semi-arid Region of Paraíba for Food Security and Poverty Alleviation in Agreste and Cariri" Project (#23-1905-02) - Gravatá Sul community in the Remígio municipality • Dinner at Tábua de Carne Restaurant • Debriefing/reflection session 	Study Tour Leader, Viviane de Jesus & Olga Matos	<p>Approx. 3.5 hr. flight from Salvador to Campina Grande</p> <p>Approx. 15 min. drive from airport to hotel</p> <p>Overnight at the Marc Center Hotel in Campina Grande Website: www.marccenterhotel.com</p>
Thursday Oct. 20, 2011	<ul style="list-style-type: none"> • Breakfast at the hotel • Travel back to the Remígio municipality and 	Study Tour Leader, Viviane	Approx. 1 hr. drive from hotel

<p>Day Four</p>	<p>visit the Canoa de Dentro community – meet with the women’s group and tour the fruit processing unit (This community is part of the same Project #23-1904-02) – learn about water collection techniques and the connection to fruit and livestock production</p> <ul style="list-style-type: none"> • Lunch with the community • Attend a community meeting at the church to ask questions and exchange ideas • Travel to Soledade to tour the Agroecological Bodega (store) • Return to Campina Grande • Dinner at the hotel 	<p>de Jesus & Olga Matos</p>	<p>to Remígio project area</p> <p>Overnight at the Marc Center Hotel</p>
<p>Friday Oct. 21, 2011</p> <p>Day Five</p>	<ul style="list-style-type: none"> • Breakfast at the hotel and check-out • Early departure to Caruaru, arrival and check-in to Vila Rica Hotel • City tour of Caruaru and the Feira de Caruaru (a local handicraft market) • Lunch at a traditional local restaurant • Presentation at the Sabiá office on the partner organization and work done in the region • Dinner and dancing at a local traditional Forró restaurant 	<p>Study Tour Leader, Viviane de Jesus & Olga Matos</p>	<p>Approx. 2 hr. drive from Campina Grande to Caruaru</p> <p>Overnight at the Vila Rica Hotel in Caruaru</p>
<p>Saturday Oct. 22, 2011</p> <p>Day Six</p>	<ul style="list-style-type: none"> • Breakfast at the hotel • Visit the “Agroforestry and Animal Husbandry” Project (#23-1808-02) – Pedra Branca community in the Cumaru municipality • Individual family & livestock farm visits • Lunch with a small farmer family • Meeting with the Pedra Branca community • Dinner at a local restaurant 	<p>Study Tour Leader, Viviane de Jesus & Olga Matos</p>	<p>Approx. 1 hr. drive from hotel to Cumaru project area</p> <p>Overnight at the Vila Rica Hotel</p>
<p>Sunday Oct. 23, 2011</p> <p>Day Seven</p>	<ul style="list-style-type: none"> • Breakfast at the hotel • Travel to the “Quilombolas Defending Life and Food Sovereignty and Security” Project (#23-1842-02) – Conceição das Crioulas (Vila Centro) in the Salgueiro municipality • Lunch en route • Meet with the Quilombola Association of Conceição das Crioulas (AQCC) for a presentation about the partner organization and work done in the region (http://en.wikipedia.org/wiki/Quilombola) 	<p>Study Tour Leader, Viviane de Jesus & Olga Matos</p>	<p>Approx. 5 hr. drive from Caruaru to Salgueiro</p> <p>Overnight with the Community (bring small overnight bag and leave luggage at the Salgueiro Hotel)</p>

	<ul style="list-style-type: none"> • Dinner and Overnight with host families 		
Monday Oct. 24, 2011 Day Eight	<ul style="list-style-type: none"> • Breakfast with host families • Visit with the women’s group to discuss women empowerment, backyard production and income generation • See women’s traditional handicraft work (dolls made of imbirá root and corn straw) • Lunch with the community • Meet with youth group to discuss education, communication and video production • Quilombola Soul Party! • Travel back to hotel Salgueiro Plaza Hotel • Dinner at the hotel 	Study Tour Leader, Viviane de Jesus & Olga Matos	Approx. 1 hr. drive from Conceição das Crioulas to Salgueiro Overnight at the Salgueiro Plaza Hotel Website: www.salgueiroplaza.com.br
Tuesday Oct. 25, 2011 Day Nine	<ul style="list-style-type: none"> • Breakfast at the hotel and check-out • Travel to Petrolina • Lunch en route • Afternoon flight from Petrolina to Salvador (11:40am to 12:54pm) • Transfer to hotel and check-in • Final debriefing/reflection session • Optional beach excursion to Porto de Barra or Pelourinho • Dinner at the hotel 	Study Tour Leader, Viviane de Jesus & Olga Matos	Approx. 4 hr. drive from Salgueiro to Petrolina Approx. 1.5 hr. flight from Petrolina to Salvador Overnight at the Hotel Bahia do Sol in Salvador
Wednesday Oct. 26, 2011 Day Ten	<ul style="list-style-type: none"> • Breakfast at the hotel and check-out • Departure flights from Deputado Luis Eduardo Magalhaes International Airport (SSA) in Salvador, Brazil 	Study Tour Leader, Viviane de Jesus & Olga Matos	

**Please Note: The trip itinerary is subject to change at any time, even once a trip commences.*

STAFF JOINING THIS STUDY TOUR



Viviane Jesus

Viviane de Jesus is 32 years old and is the current Program Assistant for the Heifer Brazil-Argentina Program. She has an undergraduate degree in Tourism Management. Viviane has been working for the last 5 years in the field of Development, with experience in International NGO's.



Olga Matos

Olga L. Matos is 44 years old and is the Heifer Brazil-Argentina Regional Coordinator for the Northeastern Region. She has undergrad and graduate economy degrees with experience in the field of sustainable development, regional economy, food sovereignty and security, human right to food and gender equity. Olga has been working in the third sector for 20 years.

MAPS



Base 801413 (R00773) 5-94

Agroecological Transition in the Semi-arid Region of Paraíba for Food Security and Poverty Alleviation in Agreste and Cariri Project (#23-1905-02)

This project will help 1,440 rural families in two semi-arid ecosystem regions in the state of Paraíba in northeastern Brazil change from a conventional production to agroecological production. Participants will learn ecological-based principles, methods and technologies that lead to recovering the ecosystem's natural balance, sustainability, stability and productivity of agricultural and livestock activities. The goal is to achieve food and water security, and to increase income for rural families. To achieve this, project activities will focus on small-scale farmer research and diffusion of agroecological innovations, which support the management of available local resources and improve the sustainability of local agro-ecosystems. The project will emphasize activities related to improving small- and medium-scale animal husbandry, increasing farm production, processing of added-value products and market access. The project will benefit 600 original families and 840 through Passing on the Gift, while specifically working with youth and women. Beneficiaries will receive training, and the project will provide \$167,000 in revolving funds for the purchase of seeds, animals, wire, equipment and other items. It will also work with organizations such as the Regional Collective of Cariri, Curimatau and Seridó and the Union Pole and Family Agriculture Organizations of Borborema to strengthen their skills as agroecology promoters in order to increase their analytical and advocacy capacity in local policy forums, which will then strengthen the community.

Agroforestry and Animal Husbandry: Experimenting and Spreading Sustainable Production Systems through Solidary Revolving Funds in Pernambuco Project (#23-1808-02)

This project will contribute directly to food security and ecological management of production and agroforestry systems for 150 small farmer families in two semi-arid regions of Pernambuco state. Original project participants will receive 156 goats, 650 local breed chickens and 300 beehives. A total of 400 families stand to benefit from the project through community management of revolving funds and "passing on the gift" of resources and knowledge. This project will include educational activities on agroforestry and animal husbandry, as well as the exchange, systematization and dissemination of experiences across rural organizations in Brazil's northeast. It will also encourage farmer organizations to participate in advocacy for public policy on sustainable rural development.

Quilombolas Defending Life and Food Sovereignty and Security and Local Development in Moho Project (#23-1842-02)

In Brazil, Quilombos were black communities generally formed by escaped slaves. Today, there are more than 3,000 remaining Quilombo communities, made of ancestors of the slaves, or Quilombolas. More than half of these communities are in the northeast, and many maintain the cultural traditions from their African roots. Most Quilombolas do not have their territory recognized or have proper conditions to work and make a living, even though laws exist to guarantee them those rights.

Consequently, many Quilombo communities suffer from food insecurity resulting from interference of plantations that seize the best land and destroy local vegetation by practicing conventional agriculture, accelerating soil erosion and loss of biodiversity. The Quilombola Community of Conceição das Crioulas is in the semi-arid region of Pernambuco. The estimated 4,000 inhabitants survive basically by family agriculture and handicrafts. The partnership with Heifer will benefit 170 original families and 250 families by passing on the gift, and will reinforce their production systems on the basis of agroecology, support training and contribute to better-coordinated advocacy for suitable public policies. The project will also work to recover territory and reinforce ethnic and gender equity.